

The Locatelli TCL 50.50 mobile crane has a maximum safe working load of 50t and delivers excellent all-round lifting capability with a maximum tip height of 41.2m and a maximum radius of 32m.

It is based on a compact four-axle chassis powered by the latest and most sustainable diesel engine. All lifting systems are monitored and controlled by a sophisticated load moment system.



 Right or Left Hand Drive available

**50,000kg** Max Lifting Capacity



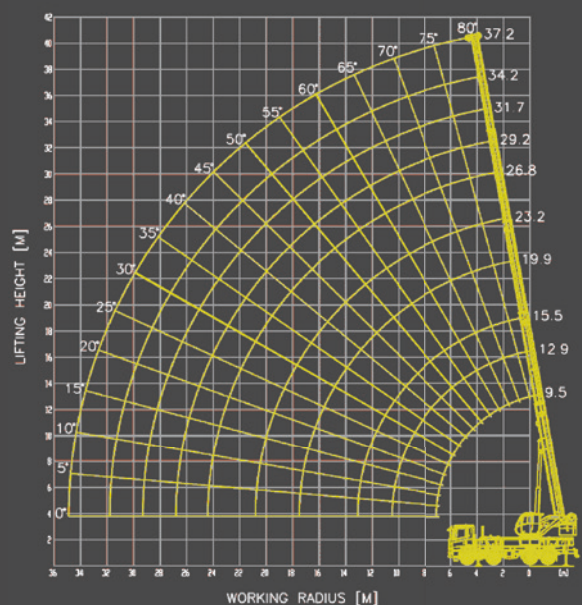
CPCS A60C Mobile Crane



## Technical Specifications

Max Lifting Capacity	50,000kg
Boom Length	10.1m - 37.2m
Max Boom Height	41.2m
Max Working Radius	32m
Outrigger Footprint (fully extended)	6600x6600mm
Counterweight	1.2-7.0t
Travelling Dimensions	11.0m (L) 2.5m (W) 3.9m (H)
Travelling Speed	56mph
Total Weight	32,000kg

## Working Envelope



	9.5m	12.9m	15.5m	19.9m	23.2m	26.8m	29.2m	31.7m	34.2m	37.2m
2.5m	55.0									
3.0m	50.0	42.2	32.6	19.7	19.4					
3.5m	41.8	37.3	28.5	20.0	18.3	16.5				
4.0m	36.4	33.1	25.8	20.0	17.3	15.5	14.0			
4.5m	33.2	30.3	24.1	20.5	16.4	14.8	13.7	10.9		
5.0m	27.8	26.7	22.5	20.7	15.5	14.2	13.0	10.6	6.5	
6.0m	22.1	21.7	19.9	21.0	14.0	13.0	11.8	9.6	9.3	6.4
7.0m		17.6	17.3	18.3	12.7	11.8	10.8	9.0	8.8	5.9
8.0m		14.3	15.1	15.5	11.6	11.0	10.0	8.4	8.3	5.3
9.0m		11.1	13.0	13.1	10.7	10.2	9.2	7.9	7.7	4.8
10.0m			11.3	11.4	9.9	9.5	8.3	7.4	7.2	4.5
12.0m			8.9	9.0	8.9	8.9	7.2	6.5	6.3	3.8
14.0m				7.3	7.4	7.4	6.1	6.0	5.5	3.2
16.0m				5.9	6.9	6.0	5.5	5.3	4.8	2.9
18.0m					5.0	5.0	4.9	4.8	4.4	2.4
20.0m						4.1	3.9	4.1	4.1	2.1
22.0m						3.4	3.1	3.4	3.4	1.8
24.0m							2.5	2.8	2.7	1.6
26.0m								2.4	2.2	1.4
28.0m									1.8	1.3
30.0m									1.4	1.2
32.0m										1.0

	9.5m	12.9m	15.5m	19.9m	23.2m	26.8m	29.2m	31.7m	34.2m	37.2m
2.5m	55.0									
3.0m	50.0	42.2	32.6	19.7	19.4					
3.5m	41.8	37.3	28.5	20.0	18.3	16.5				
4.0m	36.4	33.1	25.8	20.0	17.3	15.5	14.0			
4.5m	33.2	30.3	24.1	20.5	16.4	14.8	13.7	10.9		
5.0m	27.8	26.7	22.5	20.7	15.5	14.2	13.0	10.6	6.5	
6.0m	22.1	21.7	19.9	21.0	14.0	13.0	11.8	9.6	9.3	6.4
7.0m		17.6	17.3	18.3	12.7	11.8	10.8	9.0	8.8	5.9
8.0m		14.3	15.1	15.5	11.6	11.0	10.0	8.4	8.3	5.3
9.0m		11.1	12.8	13.1	10.7	10.2	9.2	7.9	7.7	4.8
10.0m			10.5	11.4	9.9	9.5	8.3	7.4	7.2	4.5
12.0m			7.3	8.6	8.9	8.9	7.2	6.5	6.3	3.8
14.0m				6.5	7.4	7.1	6.1	6.0	5.5	3.2
16.0m				5.0	5.8	5.6	5.3	5.3	4.8	2.9
18.0m					4.8	4.5	4.3	4.7	4.4	2.4
20.0m						3.6	3.4	3.8	3.7	2.1
22.0m						2.9	2.7	3.1	3.0	1.8
24.0m							2.1	2.6	2.4	1.6
26.0m								2.1	1.9	1.4
28.0m									1.5	1.3
30.0m									1.2	1.2
32.0m										0.9

	9.5m	12.9m	15.5m	19.9m	23.2m	26.8m	29.2m	31.7m	34.2m	37.2m
2.5m	55.0									
3.0m	50.0	42.2	32.6	19.7	19.4					
3.5m	41.8	37.3	28.5	20.0	18.3	16.5				
4.0m	36.4	33.1	25.8	20.0	17.3	15.5	14.0			
4.5m	33.2	30.3	24.1	20.5	16.4	14.8	13.7	10.9		
5.0m	27.8	26.7	22.5	20.7	15.5	14.2	13.0	10.6	6.5	
6.0m	22.1	21.7	19.9	20.5	14.0	13.0	11.8	9.6	9.3	6.4
7.0m		16.7	16.1	16.8	12.7	11.8	10.8	9.0	8.8	5.9
8.0m		12.9	12.8	13.7	11.6	11.0	10.0	8.4	8.3	5.3
9.0m		10.3	10.1	11.4	10.7	10.2	9.2	7.9	7.7	4.8
10.0m			8.3	9.6	9.9	9.5	8.3	7.4	7.2	4.5
12.0m			5.6	7.0	7.8	7.4	6.9	6.5	6.3	3.8
14.0m				5.2	7.0	5.8	5.4	5.7	5.4	3.2
16.0m				3.9	5.2	4.5	4.3	4.6	4.4	2.9
18.0m					3.8	3.5	3.4	3.8	3.5	2.4
20.0m						2.8	2.6	3.0	2.9	2.1
22.0m						2.2	2.0	2.4	2.3	1.8
24.0m							1.5	1.9	1.8	1.6
26.0m								1.5	1.4	1.3
28.0m									1.0	1.0
30.0m									0.7	0.7
32.0m										0.5

	9.5m	12.9m	15.5m	19.9m	23.2m	26.8m	29.2m	31.7m	34.2m	37.2m
2.5m	55.0									
3.0m	50.0	42.2	32.6	19.7	19.4					
3.5m	41.8	37.3	28.5	20.0	18.3	16.5				
4.0m	36.4	33.1	25.8	20.0	17.3	15.5	14.0			
4.5m	33.2	30.3	24.1	20.5	16.4	14.8	13.7	10.9		
5.0m	27.8	26.7	22.5	20.7	15.5	14.2	13.0	10.6	6.5	
6.0m	22.1	21.7	19.9	21.0	14.0	13.0	11.8	9.6	9.3	6.4
7.0m		17.6	17.3	18.3	12.7	11.8	10.8	9.0	8.8	5.9
8.0m		14.3	14.0	15.0	11.6	11.0	10.0	8.4	8.3	5.3
9.0m		10.9	10.6	12.0	10.7	10.2	9.2	7.9	7.7	4.8
10.0m			8.3	9.7	9.9	9.5	8.3	7.4	7.2	4.5
12.0m			5.1	6.7	7.7	7.1	6.6	6.5	6.3	3.8
14.0m				4.7	5.7	5.2	4.9	5.3	4.9	3.2
16.0m				3.4	4.4	4.0	3.7	4.1	3.8	2.9
18.0m					3.3	3.0	2.7	3.2	2.9	2.4
20.0m						2.2	2.0	2.4	2.2	2.1
22.0m						1.7	1.4	1.9	1.7	1.6
24.0m							1.0	1.4	1.2	1.2
26.0m								1.0	0.8	0.9
28.0m									0.5	0.5
30.0m										
32.0m										